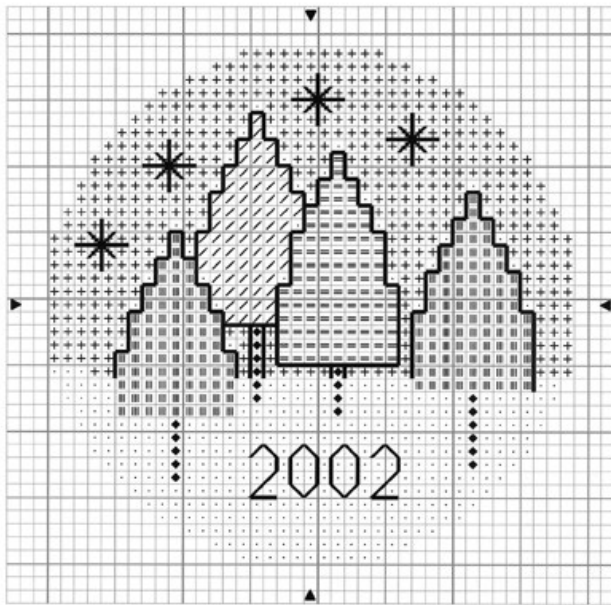
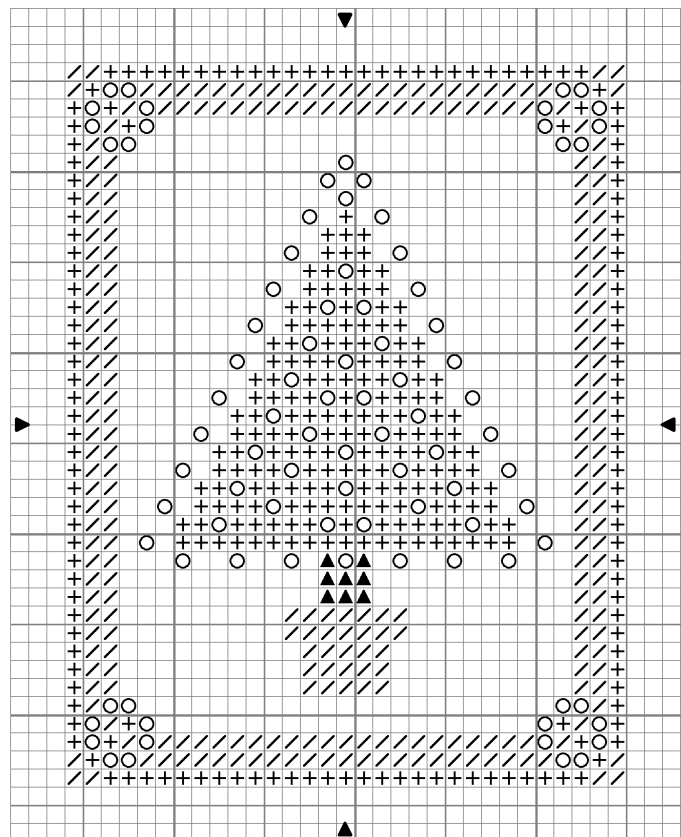
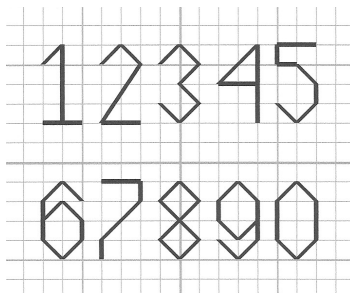


Christmas Cross Stitch

Cross stitch designs by Jan Eaton for Tom Pudding Designs - please note that these designs were originally available in 2002/2003 as website freebies.



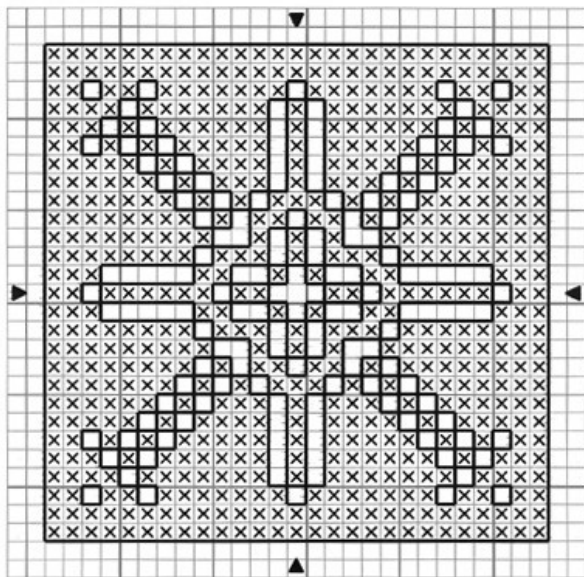
- Kreinik #4 Braid 032 pearl
- + DMC 792 dark cornflower blue
- III DMC 500 very dark blue green
- ≡ DMC 910 dark emerald green
- / DMC 702 kelly green
- ◆ DMC 975 dark golden brown



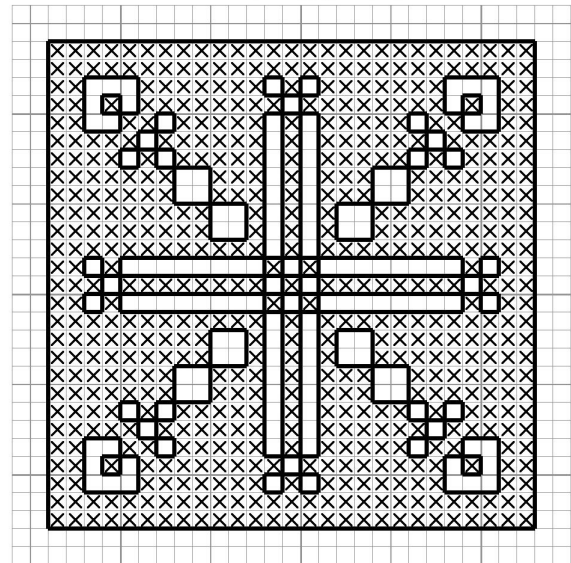
- Kreinik #4 braid 002 gold
- / DMC 606 bright orange red
- ▲ DMC 400 dark mahogany
- + DMC 909 very dark emerald green



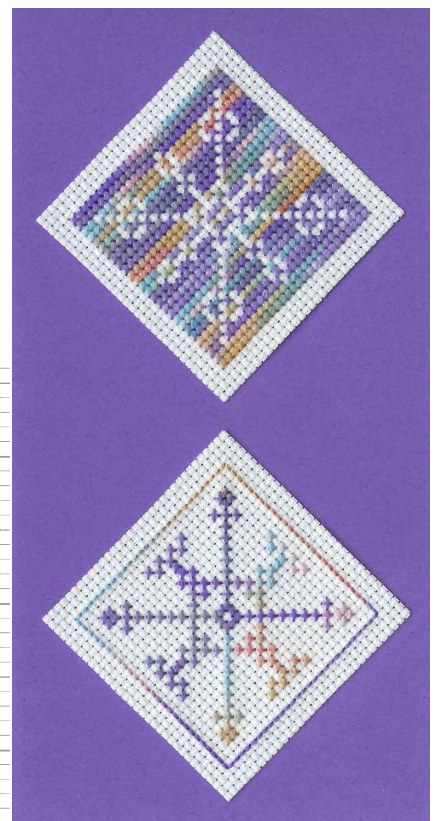
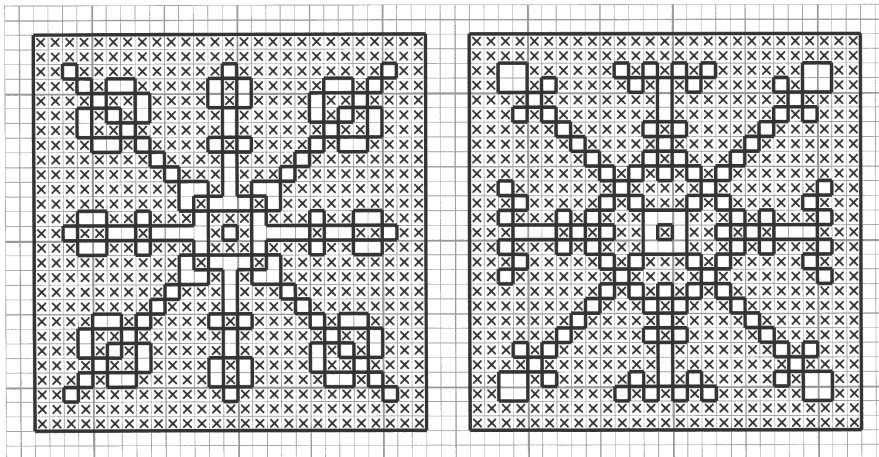
snowflake 2 ornament - copyright Jan Eaton 2003

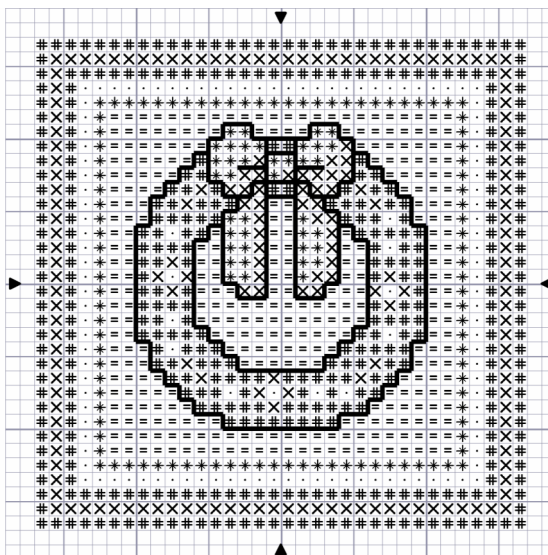
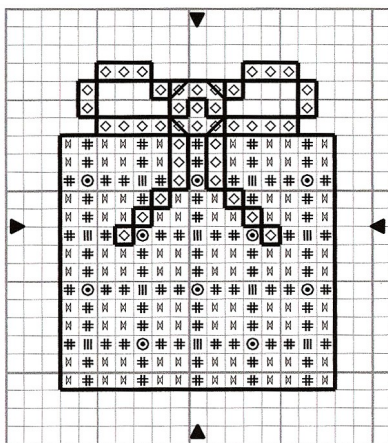


snowflake 1 ornament © Jan Eaton 2003



snowflake 3 & snowflake 4 - copyright Jan Eaton 2003





- DMC 973 bright canary
- * DMC 606 bright orange red
- X DMC 321 Christmas red
- # DMC 699 Christmas green
- = DMC 702 kelly green

back stitch in:

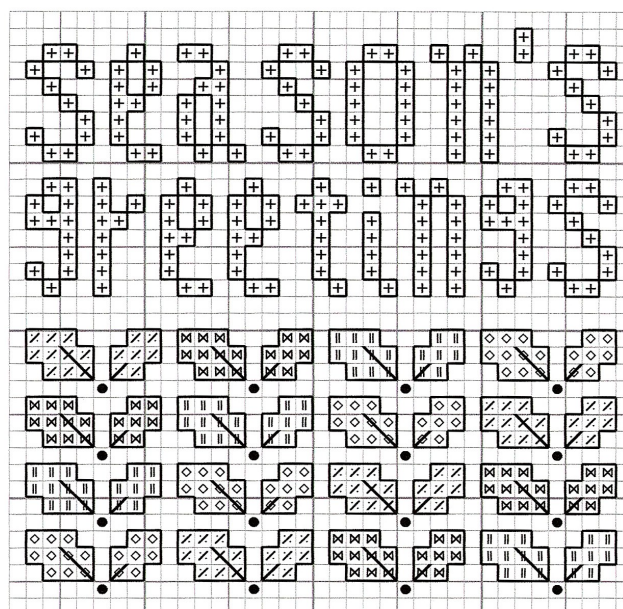
— DMC 3799 very dark pewter grey



- ⌘ DMC 973 bright canary
- # DMC 3838 dark lavender blue
- ◇ DMC 3837 very dark lavender
- ||| DMC 3801 light Christmas red
- ⊙ silver seed bead



- + DMC 3801 light Christmas red
- || DMC 3346 hunter green
- ⊗ DMC 989 forest green
- ⌘ DMC 911 medium emerald green
- ◇ DMC 702 kelly green
- red seed bead



Christmas Cross Stitch designs, chart and text © Jan Eaton 2002/2003. Free PDF version © Jan Eaton 2010. All rights reserved. This material is covered by copyright law and all rights remain with the designer. No part of this design may be reproduced in any form, transmitted in any form or by any means, be it print, electronic, photocopying, translation or otherwise, in any format or under any circumstances without prior permission of the copyright holder. Similarly, none of the Christmas Cross Stitch designs may not be reproduced or used for any commercial purposes including promotion or sales, individual or otherwise, without prior permission of the copyright holder. Email Jan at wibbos.works@yahoo.co.uk